

Single-Point
Administration



Scheduled
Integration



Performance Monitoring
Dashboard

Pervasive Integration Manager

Overwhelmed by Distributed Data Integration?

Fast, easy and affordable Pervasive® Integration Manager™ helps take the pain and costs out of automating and managing distributed Integration Engines. With single-point administration and powerful tools, Integration Manager reduces the burden of deploying IT personnel at remote locations. At the same time, Integration Manager can improve scheduling, monitoring and reporting on engine executions while providing a scalable architecture for future growth.

The Challenges of Distributed Integration

In today's organizations, data must often be accessed, transformed, and integrated across multiple computing platforms and geographical locations. However, without a single point of administration and control, distributed integration can be cumbersome, timely, and costly.

In fact, distributed integration can become unmanageable when each point of integration must be attended locally by an administrator. Local, multi-point administration can lead to overall poor performance and high costs associated with having to deploy trained personnel on-site and the proliferation of non-standard engine configurations.

What's more, development and maintenance costs will grow as the number of integration points continues to grow. Monitoring and managing remote points of integration will be expensive and difficult.

Flexible, Effective Single-Point Administration

Pervasive Integration Manager provides a fast, easy, and affordable solution for the integration of distributed data stores. Through a user-friendly, browser-based interface, Integration Manager performs deployment, scheduling, on-going monitoring, and real-time reporting on an individual or groups of distributed Integration Engines.

Since all management is performed from a single administration point, Integration Manager improves operational efficiency in the management of geographically distributed Integration Engines.

With the ability to remotely administer any number of integration points throughout the organization, customers can build out their integration infrastructure as required, using a flexible and scalable architecture designed for easy manageability.

Take Costs Out with These Benefits:

- Fast, easy, and affordable solutions for the remote management of distributed data integration
- Reduced integration management cost and improved performance with single-point administration
- Easy adaptation to future requirements with scalable architecture
- Low Total Cost of Ownership (TCO)
- Experience, expertise, and proven technology from a global value leader in data integration

"Pervasive's low total cost of ownership and accelerated time to deployment offered us far better ROI with immediate results."

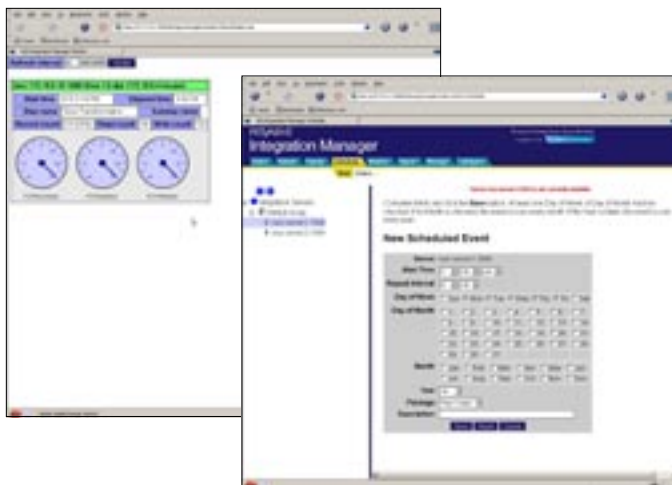
—Northrop Grumman

"We estimate that within three months, Pervasive has returned our initial investment, as the bandwidth of each of our resources increased by more than 100 percent."

—Cerdian

"Pervasive's solution for data integration was absolutely the right choice to manage our complex, episodic phone switch data conversions and to migrate major applications to distributed processing environments. As a result, we have cut our mainframe processing costs by almost half."

—MCI International



Features for Easy, Versatile Management

Scheduling:

- A choice of manual and scheduled deployment within the managed distributed engine architecture
- Easy-to-use, browser-based scheduler
- Ability to schedule events remotely to all engines
- Facilitates 24X7 operation
- Ability to schedule events on a particular day, week or month, down to a specific minute
- Ability to determine which engines are available to schedule package
- Real-time scheduler report to monitor scheduled events when and by whom
- Ability to schedule events based on frequency interval (for example, Tuesday and Wednesday of every week)

Real – Time Monitoring:

- Real time monitoring for each executing engine
- Collection and retention of execution statistics

- Visual dials presenting actionable information
- Indication of each process step
- Indication of integration engine throughput

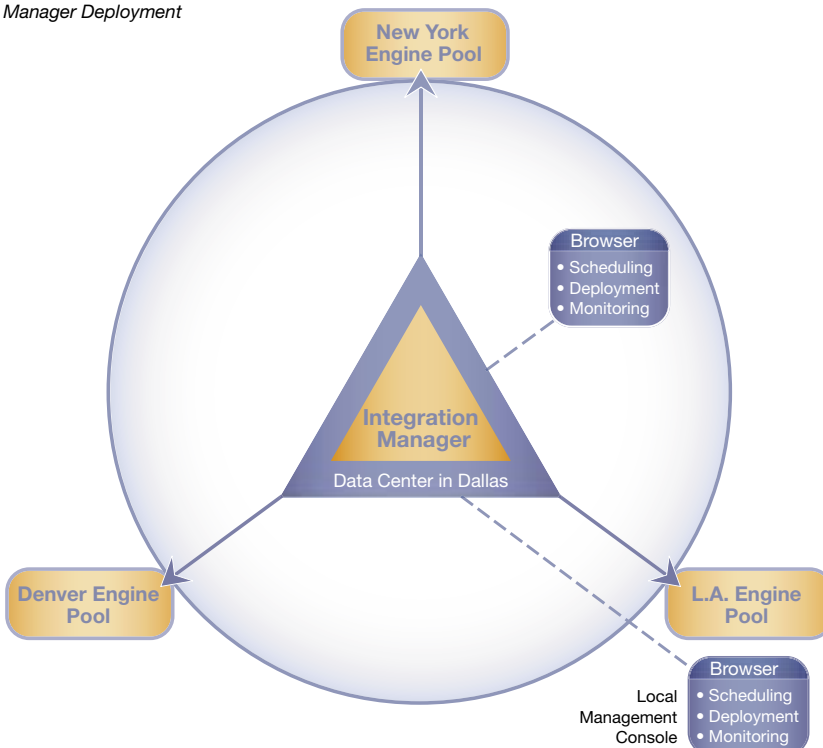
Reporting:

- Execution through manual or automated of scheduled events
- Deployment Report
- High-level and detailed process reporting
- High-level reporting activity from engine

Management and Security:

- Engine management including the ability to set configurations of remote integration engines (for example, how many instances of engines) and stop integration engines
- Engine version management provided from remote console
- Secure authentication (login)
- Role-based user authentication for controlling degrees of access to data

Integration Manager Deployment



* Pro Version Only

ABOUT PERVASIVE SOFTWARE



Pervasive Software is a global value leader in data infrastructure software. The company's award-winning products enable customers to manage, integrate, analyze and secure their critical data, providing the industry's best combination of performance, reliability and cost. Pervasive's strength is evidenced by the size and diversity of its customer base, serving tens of thousands of customers in virtually every industry market around the world. With headquarters in Austin, Texas, Pervasive was founded in 1994 and sells its products into more than 150 countries.

FOR MORE INFORMATION

- To learn more about Pervasive Software and our solutions, please visit www.pervasive.com.
- To reach the North American sales office, call **1.800.287.4383, extension 2**.
- For Latin, Central and South America, Australia and New Zealand, call **+1.512.231.6000**.
- In Europe, for Belgium, France, Germany, Italy, Luxembourg, The Netherlands, Spain, Sweden, Switzerland and the United Kingdom, call **+800.12.12.34.34**.
- For any other European, Middle Eastern, African or Asian countries (excluding Japan), call **+32.70.23.37.61**.
- For Japan, please call **+81.3.3293.5300**, or visit www.pervasive.com.jp.